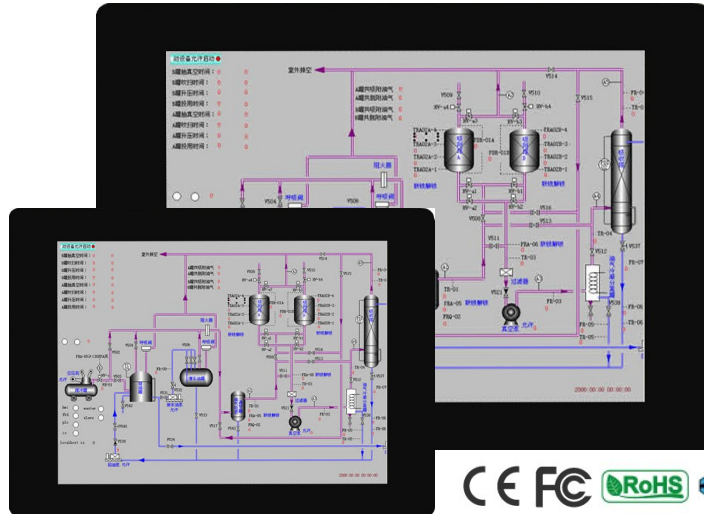


RX Series HMI



◆ Specifications

Model	RX150-4/6	RX121-4/6	RX104-4/6	RX070-4/6
Display				
Display Type	15" TFT	12.1" TFT	10.4" TFT	7" TFT
Resolution	1024×768	1024×768	800×600	800×480
Brightness	350cd/m ²	600cd/m ²	400cd/m ²	300cd/m ²
Contrast ratio	700:1	700:1	400:1	500:1
Backlight	LED			
LCD operating life	50,000 hrs		20,000 hrs	
Display color	65536 (16.7M million Set by software)		65536 (262K Set by software)	
Touch Panel				
Type	Five wire resistance type		Four wire resistance type	
Processor				
Configure	RISC ARM CPU (ARM11, 800MHz)			
Memory				
Extended flash memory	1GB			
Working Memory	256MB			
Battery Backup Memory	1M			
Perpetual Calendar				
Real-Time Clock (RTC)	Yes			
Communication Interface				
SD card slot	Yes			
USB	1×USB 1.1 (Main), 1×USB 2.0 (Secondary)			
LAN (10/100M)	10/100M			
Audio output	4: No; 6: Yes			
Video input	4: No; 6: Yes			
Serial Port (DB9 female)	Com1: RS-232/RS-422/RS-485 (DB9); COM2: A-RS422/485 B-RS232/485 C-RS232 with RTS&CTS (Post); Com3: RS-232 (DB9)			
Screens	Max. 7999			
Macro	Unlimited			
Power Supply				
Input power Supply	24VDC±10% (Isolated power supply)			
Power Waste	20W		15W	13W

Specifications				
Dimensions (W×H×D)	399.1×297.6×55m	351.4×245.8×58m	270.1×212.1×45m	188×143.3×40.5m
	m	m	m	m
Cutout Size (W×H)	384.5×283mm	302×228mm	259.5×201.5mm	175×132.5mm
Weight	2.68Kg	1.9Kg	1.25Kg	0.8Kg
Operating Environment				
Protection structure	IP66			
Operating Temperature	-20~60°C			
Storage Temperature	-20~60°C			
Relative Humidity	10~90% (non-condensing)			
Vibration Resistance	10~55Hz (X, Y, Z Axia 1G 30 Minute)			
Certification				
EMI	FCC Part 15 Class A			
CE	EN61000-6-2, EN61000-6-4			
Others				
Operating system	PM Designer 1.2 or newer version			



Shanghai Nematron Technology Co., Ltd.

245 Xinjun Ring Road, Suite D302 Caohejing Pujiang Hi-Tech Park, Shanghai 201114, China

Tel: +86 21 5109 6600

Fax: +86 21 5426 3008